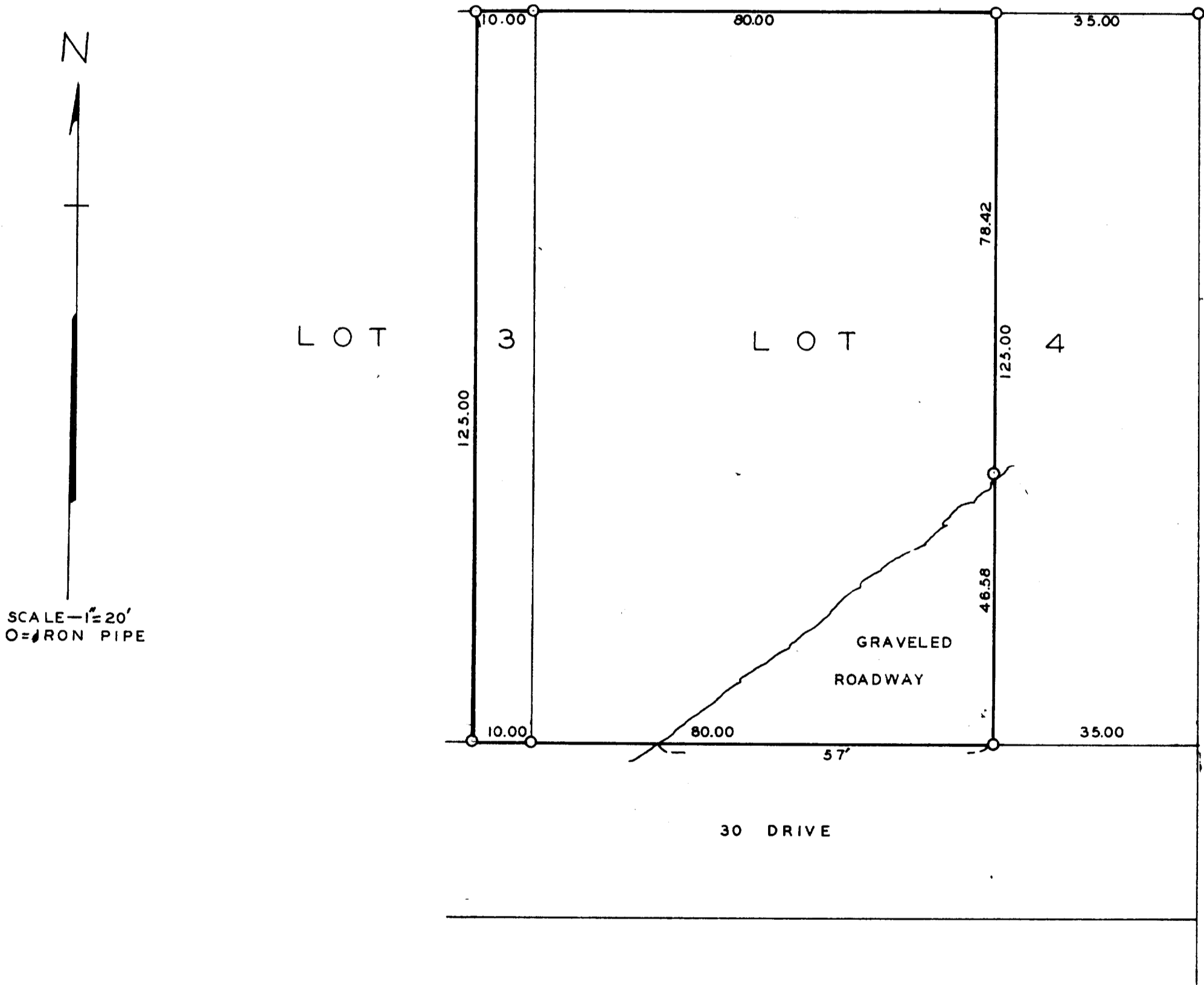


DUNHAM & RASMUSSEN  
SURVEYING & ENGINEERING  
DELAVER, WISCONSIN



Plat of Survey of Part of Lots 3 & 4 of Addition B to Country Club Estates located in the Village of Fontana, Walworth County, Wisconsin.  
June 2, 1961

*George T. Dunham*  
George T. Dunham, Wis. Land Surveyor No. S-306

5-40